

PROVIDENCE, R. I.
CITY ENGINEER'S OFFICE
STREET LINE DEPT.

July 6, 1888

013992

10 ft. side walks by grade plan

Providence R. I.
This plat accompanies
our report of this date.

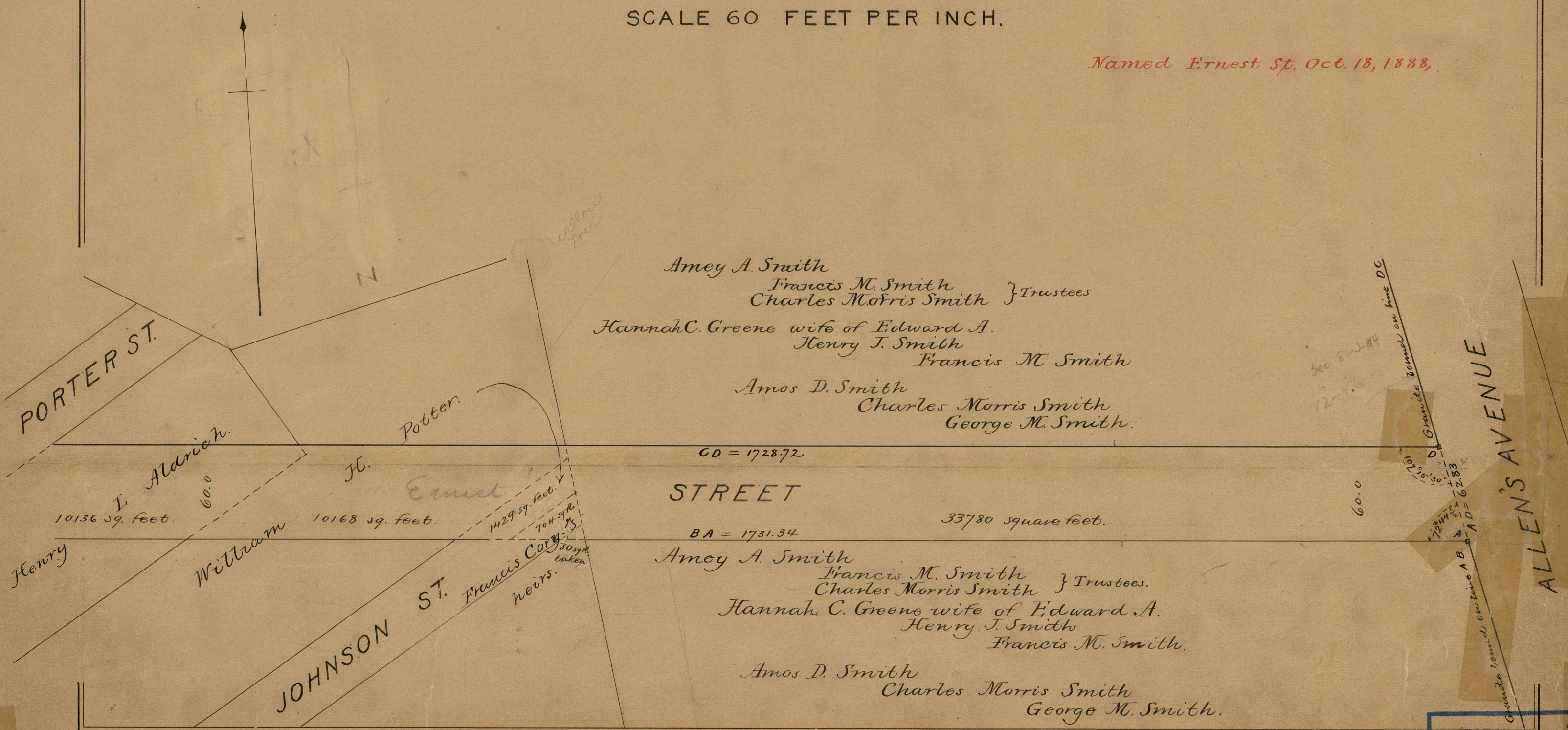
PLAT OF A *(Ernest St.)*
STREET

FROM EDDY ST. TO ALLEN'S AVE.

IN TWO SHEETS

SCALE 60 FEET PER INCH.

Named Ernest St. Oct. 18, 1888.



Amey A. Smith
Francis M. Smith } Trustees
Charles Morris Smith }

Hannah C. Greene wife of Edward A.
Henry J. Smith
Francis M. Smith

Amos D. Smith
Charles Morris Smith
George M. Smith.

CD = 1728.72

STREET

33780 square feet.

BA = 1731.34

Amey A. Smith
Francis M. Smith } Trustees.
Charles Morris Smith }
Hannah C. Greene wife of Edward A.
Henry J. Smith
Francis M. Smith.

Amos D. Smith
Charles Morris Smith
George M. Smith.

OFFICE No.	9759
DRAWER	83
SHEET	B-9